



PROFILE OF SPACE ENVIRO SOLUTIONS





About Space Enviro Solutions

- Space Enviro Solutions was established in 2014 to provide Environmental consultancy and contracting services to the industries.
- The group consists of qualified professionals with over Twelve years of experience in preparation of EIA Reports & Obtaining Consents from State Pollution Control Boards.



SES Capabilities

- Conducting Environmental Impact Assessment (EIA) studies
- Preparation of Environmental Management Plans
- Change of product mix for Bulk Drug Industries
- CTE & CTO from SPCB
- Monitoring of Environmental Parameters of Air, Water, Noise and Soil from NABL/MoEF&CC Recognized Environmental Laboratory.



SES Services

- Provide assistance in obtaining Environmental Clearance from EAC/SEIAA, MoEF for New/Expansion industries
- Provide assistance in obtaining Consent to Establishment (CTE)/ Consent to Operate(CTO) from State Pollution control Boards(SPCB)
- Annual Monitoring Contract for existing industries
- Remote Sensing & GIS Studies



Environmental Clearance (EC) ,CTE and CTO

- Preparation & Submission of Form-1, Proposed TOR & PFR to EAC/SEIAA, MoEF&CC
- Presentation on Form-1 and Proposed TOR to EAC/SEIAA, MoEF&CC
- Obtaining Approved TOR from EAC/SEIAA, MoEF&CC
- Preparation of Environmental Impact Assessment (EIA)
- Report as per approved TOR.
- Giving guidance in Conducting Public Hearing
- Presentation on final EIA to EAC/SEIAA, MoEF&CC
- Assist in obtaining Environmental Clearance (EC) from EAC/SEIAA, MoEF&CC
- Assist in obtaining CTE/CTO from SPCB

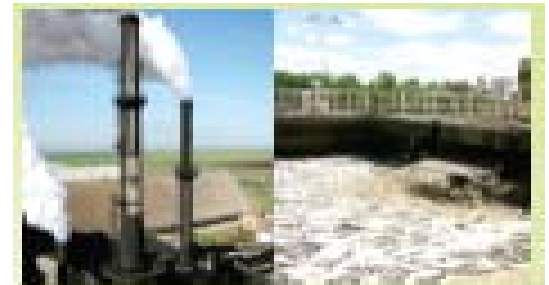




SPACE ENVIRO SOLUTIONS
ENVIRONMENT & ENERGY CONSULTING

SES Annual Monitoring Contract (AMC)

- Quarterly monitoring of Ambient Air Quality, Noise Quality, Water & Waste Water analysis and Stack Emission Monitoring as per the standards of CPCB will be conducted by MOEF Recognized Laboratory.
- Submission of required monitoring reports to SPCB
- Preparation of Environmental Statement (Form-V) & Submission to SPCB
- Preparation of Half-Yearly Compliance reports & Submission to SPCB



Quality Policy

We at Space Enviro Solutions providing Consultancy Services for obtaining Environmental Clearances, Consent for Establishment and Consent for Operation for Building and Construction, Mining Projects & Industries by comply with the requirements of Quality Management System.

This shall be achieved by:

- Meeting Customer, Statutory & Regulatory requirements.
- Setting objectives & targets periodically.
- Continual review and upgrading of systems
- Familiarizing our staff with the policies and procedures for better implementation.
- Employing competent personnel and providing training.



Accredited Sectors by NABET

S.No	SECTORs
1.	Building and Large Construction
2.	Mining of Minerals
3.	Synthetic organic chemicals industry (dyes & dye intermediates; bulk drugs and intermediates excluding drug formulations; synthetic rubbers; basic organic chemicals, other synthetic organic chemicals and chemical intermediates)
4.	Cement plants
5.	Metallurgical Industries (ferrous & non-ferrous)
6.	Industrial Estates/ Parks/ Complexes/Areas, Export Processing Zones(EPZs), Special Economic Zones(SEZs), Biotech Parks, Leather Complexes
7.	Common Municipal Solid Waste Management Facility (CMSWMF)
8.	Thermal Power Plants



Technical Team

- **Mr. K. Jithendhar Reddy – CEO** – He has done his M.Tech (Master of Technology) in Environmental Management & Technology (JNTU Campus, Hyderabad) and having good experience in the fields of EIA/EMP projects. He is an Approved EIA Coordinator Accredited by QCI, NABET for Building & Construction Projects, Mining of Minerals, Synthetic Organic Chemicals (Bulk Drugs), Industrial Estates & Common Municipal Waste Management Facility & Approved Functional Area Expert (FAE) Accredited by QCI, NABET for Air Pollution Monitoring, Prevention & Control (AP), Water Pollution Prevention & Control (WP) and Ecology & Biodiversity.
- **Mr. L. Chandrasekhar Reddy – Chief Operating Officer** – He has done his M.S (Master of Science) in Environmental Management (Roskilde University, Denmark) and having good experience in the fields of EIA/EMP projects. He is an Approved EIA Coordinator Accredited by QCI, NABET for Mining of Minerals, Thermal power plants, Metallurgical Industries & Cement plants. He is an Approved Functional Area Expert (FAE) Accredited by QCI, NABET for Solid & Hazardous Waste Management (SHW), Risk Assessment & Hazard Management (RH) and Meteorology, Air Quality Modeling & Prediction (AQ)

Our Valuable Clients

Building & Construction Projects

1. M/s. Terminus KG Ventures (P) Ltd.,
2. M/s. Starlite Global Enterprise India (P) Ltd., ,
3. M/s. GKRS Properties,
4. M/s. BPR Infrastructure Ltd.,
5. M/s. Terminus Projects LLP,
6. M/s. Terminus Infrastructure India (P) Ltd.,
7. M/s. Laurel Infra,
8. M/s. Teja Homes Pvt. Ltd.,
9. M/s. Trishala Infrastructure Pvt Ltd.,
- 10.M/s. S.V.S Infracon Pvt. Ltd.,
- 11.M/s. Namishree Infrastructure & Projects Pvt. Ltd.
- 12.M/s. Preston Developers

Our Valuable Clients

Mining Projects

1. M/s. Sunny Enterprises,
2. M/s. Ultimate Granites,
3. M/s. Golden Granites,
4. M/s. Mahi Granites (P) Ltd.,
5. M/s. Sandiya International Granites,
6. M/s. Lakshmi Granites,
7. M/s. Sai Kishore Granites,
8. M/s. Yak Granites Industries (P) Ltd.,
9. M/s. Enterprising Enterprises
10. M/s. Fujii Granites
11. M/s. Mohanchatra Monuments
12. M/s. Magum INC
13. Humpi Enterprises
14. M/s. Pooshya Exports (P) Limited
15. M/s. Sentinel Granites

Our Valuable Clients

Mining Projects

16. M/s. Bethen Granites
17. M/s. Taapasi Granites
18. M/s. Veerasiva Granites & Exports (P) Ltd
19. M/s. Laxmi Infratech
20. M/s. Asthalaxmi Granites
21. M/s. Rainbow Granites
22. Sri. S.A. Murali
23. M/s. SLNS Granites
24. M/s. Win Granites
25. M/s. Vigneshwara Granites
26. M/s. Tirumala Sai Granites
27. M/s. Jai Granites
28. M/s. Silicon Rocks
29. M/s. Evershine Granites (P) Ltd
30. M/s. Shanmugha Rocks



**We look forward to work with you on long
term association**

Thank You

Towards Sustainable Development.

